



## CC4. Sea level activity

### Sea Level Rise Group

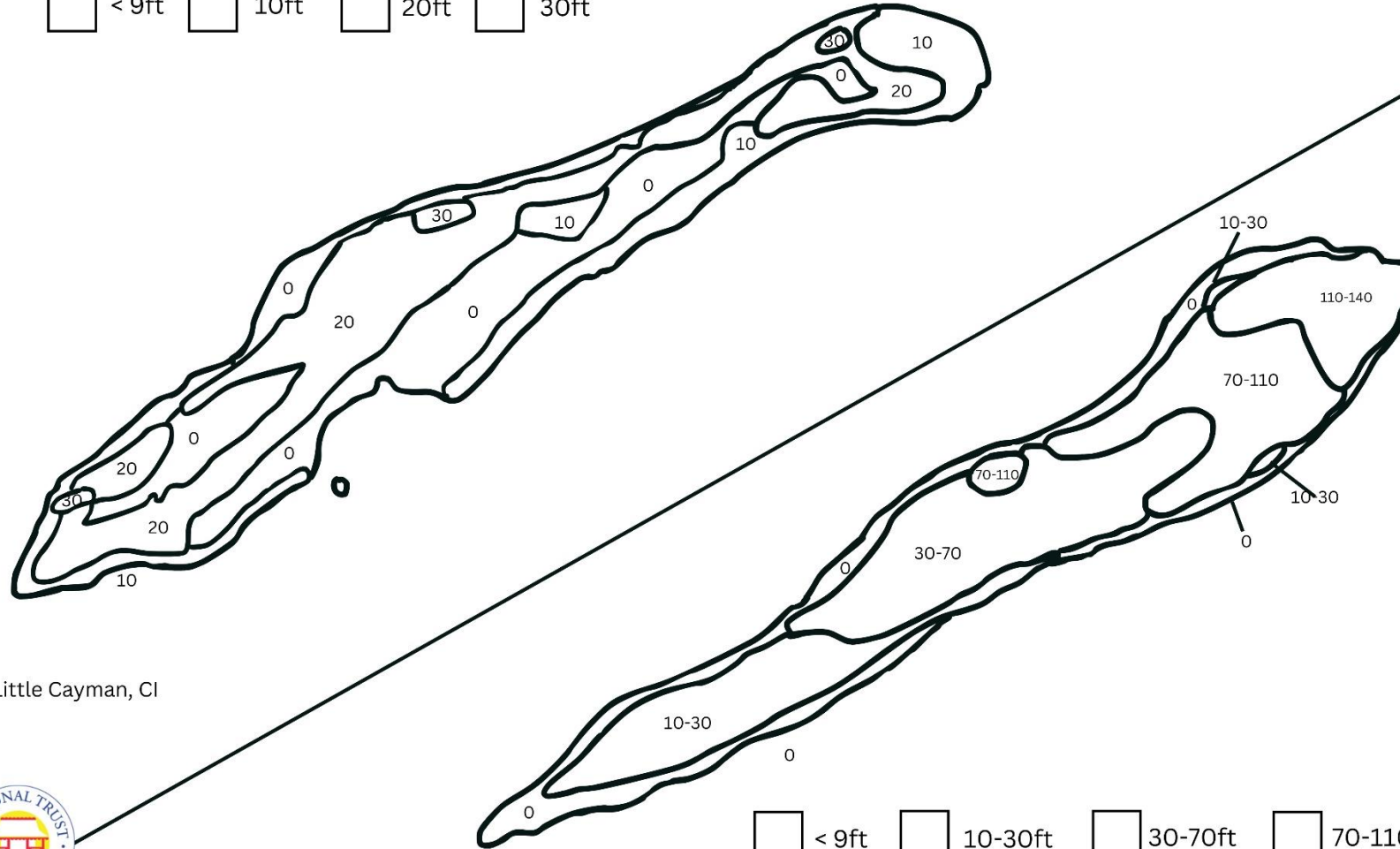
**Part 1:** In your group, start by colouring in the elevation map of Cayman Brac & Little Cayman and discuss in your group how you think sea level rise might impact our low-lying islands.

**Part 2:** Read through the sea level rise fact sheet and look at the predicted sea level rise map from the Department of the Environment. Using a red pen, outline the areas of the island you think will be most impacted by sea level rise. Using a black pen, draw text boxes and add relevant facts (from the fact sheet) about how these areas of risk will be impacted.

Think about:

- Do any of these areas have a high population of people?
- Are any of these areas important ecosystems?
- How might this impact our sister islands overall from a social, economic, and environmental point of view?

☐ < 9ft 
 ☐ 10ft 
 ☐ 20ft 
 ☐ 30ft



Cayman Brac, CI

Little Cayman, CI

☐ < 9ft 
 ☐ 10-30ft 
 ☐ 30-70ft 
 ☐ 70-110ft 
 ☐ 110-140ft

**Part 1:** Colour in the map based on elevation, discuss in your group how you think the different parts of the islands that might be impacted by sea level rise based on the elevation difference.

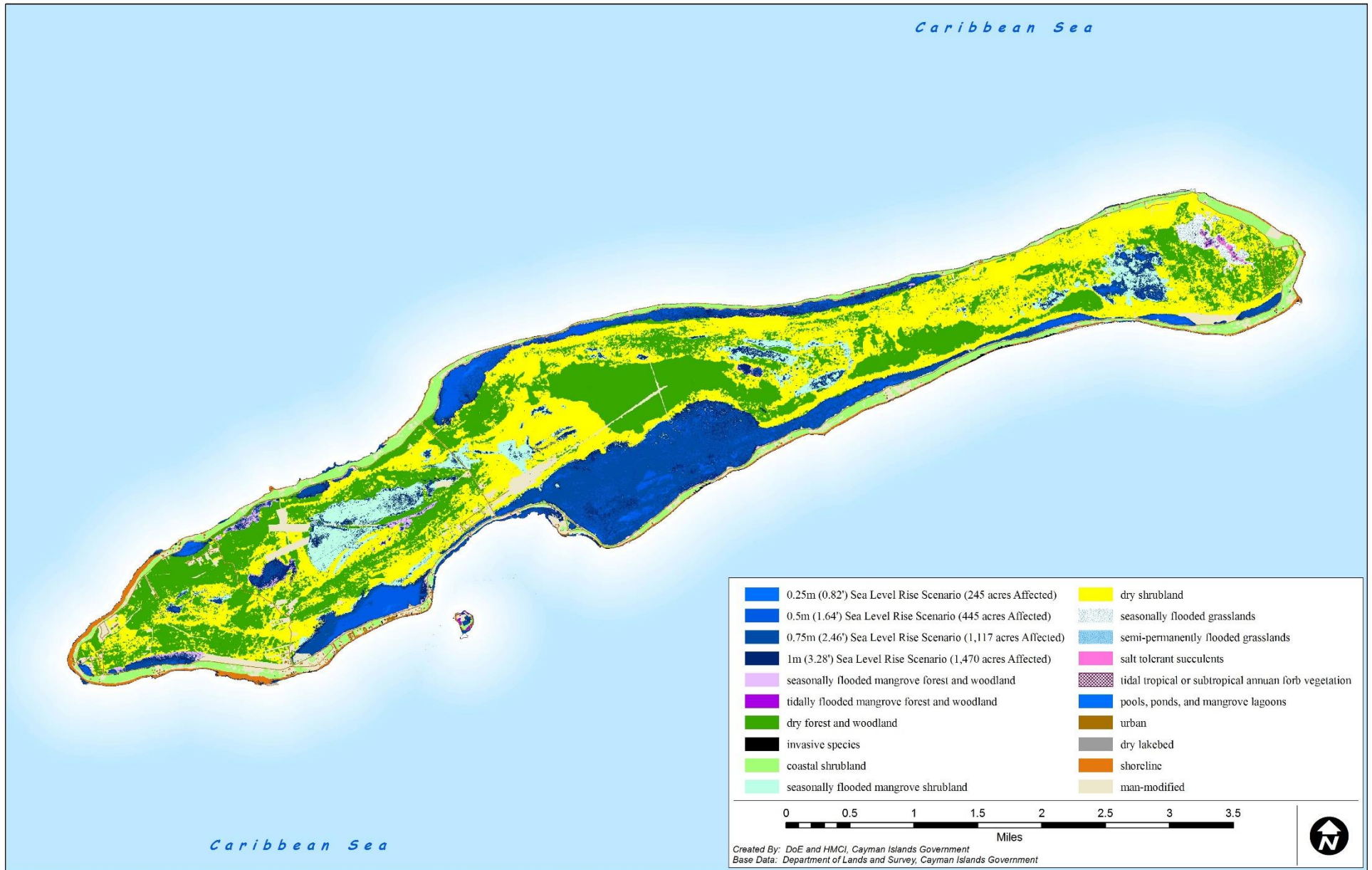
## CC4. Sea level activity

**Part 2a:** Read through the sea level rise fact sheet and look at the predicted sea level rise map from the Department of the Environment. The blue on the map shows much of the island would be flooded based on different sea level rise scenarios.



Sea level bathtub model curtsy of the Department of the Environment

## CC4. Sea level activity



Sea level bathtub model curtsy of the Department of the Environment



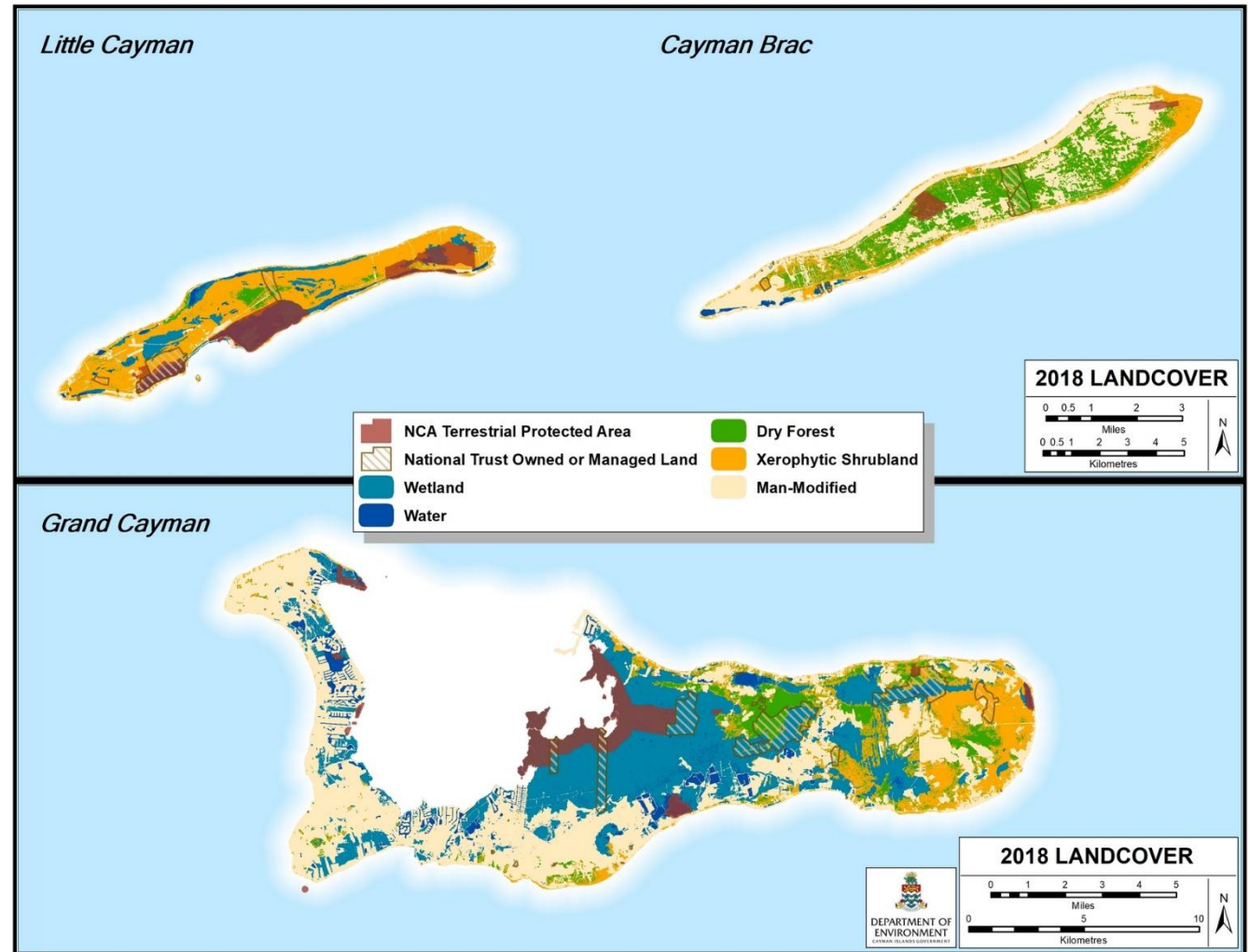
**Part 2b:** After looking at this map, using a red pen, outline the areas of the island you think will be most impacted by sea level rise. Using a black pen, draw text boxes and add relevant facts (from the fact sheet) about how these areas of risk will be impacted.

**Think about:**

- Do any of these areas have a high population of people?

**Compare this map of important ecosystems on Grand Cayman to the sea level rise map.**

- Are any of impacted areas important ecosystems?
- How might this impact Grand Cayman overall from a social, economic, and environmental point of view?



Ecosystems map curtsy of the Department of the Environment